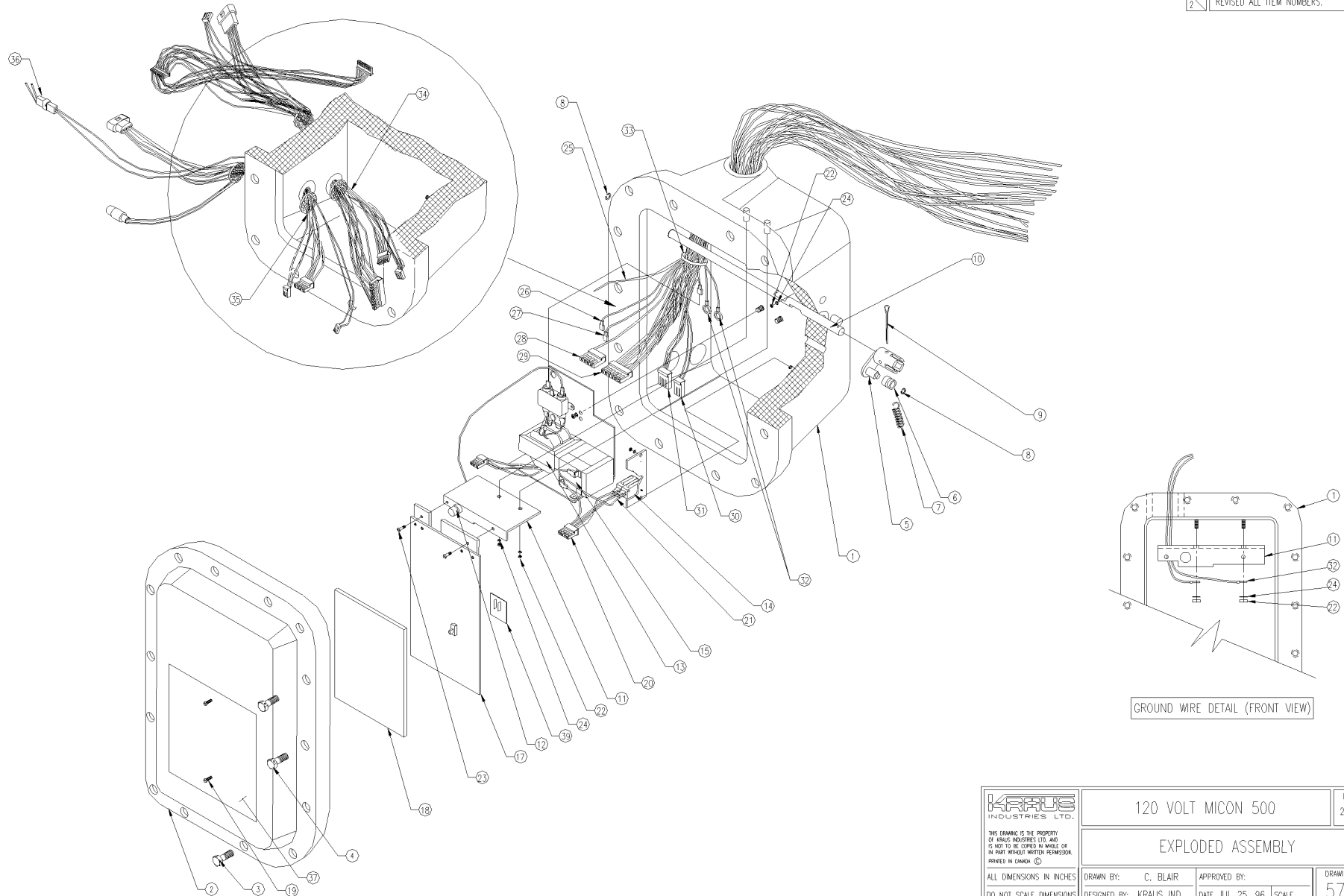


MICON 500LN EXPLODED VIEW

2 REV. DATE OCT 13 98 | E.C.O No. 2340 | REV. BY RK

2 REVISED ALL ITEM NUMBERS.



GROUND WIRE DETAIL (FRONT VIEW)

<p>THIS DRAWING IS THE PROPERTY OF KRAUS INDUSTRIES LTD. AND IS NOT TO BE COPIED IN WHOLE OR IN PART WITHOUT WRITTEN PERMISSION. PRINTED IN CANADA. ©</p>	120 VOLT MICON 500		BC OR PART No. 234AY11.ASY R02
	EXPLODED ASSEMBLY		
ALL DIMENSIONS IN INCHES DO NOT SCALE DIMENSIONS	DRAWN BY: C. BLAIR	APPROVED BY:	DRAWING No. 5776
	DESIGNED BY: KRAUS IND.	DATE JUL 25, 96 SCALE	REV. 2

**MICON 500LN PARTS (234AY11.PRT)**

ITEM	PART NO.	DESCRIPTION
1	BC0081	TUB
2	BC83	LID 3104
3		5/16 NC X 1 1/4" GRADE 5 HEX MACHINE SCREWS
4	BC1066	4568 5/16 GRADE 5 HEX MACHINE SCREWS WITH HOLES
5	BC103	HANDLE COUPLER 3155
6	BC103R	COUPLER ROLLER 3885
7	BC103S	DETENT SPRING 3884
8	R3100-25	1/4" RETAINER RINGS
9		1" X 1/8" COTTER PIN
10	BC181	CAM SHAFT 3468
11	234AY04	FUSEHOLDER AND HEATSINK ASSEMBLY
12	MDL 1/2	1/2 A SLO BLO FUSE
13	234AY02	120V PAN ASSEMBLY
14	234AY05	MICROSWITCH AND PLATE ASSEMBLY
15	NP1-6	6V 1AH BATTERY
16		
17	SKIL-463	120 VAC MAIN BOARD
18	BC719	LID SPONGE 3887
19		#4 X 1/4 U TYPE DRIVE PINS
20	W240	HANDLE SWITCH / BATTERY HARNESS

ITEM	PART NO.	DESCRIPTION
21	W248	POSITIVE BATTERY / MICROSWITCH WIRE
22		10-32 HEX NUTS (4 FOR uSW PLATE, 2 FOR HSINK, 1 FOR PAN)
23		10-32 X 3/8" PAN HEAD PHILLIPS MACH SCREWS (MAIN BRD)
24		#10 EXTERNAL TOOTH LOCKWASHER (SW PLATE, AY04, PAN)
25		36" BLK TEW 18AWG STRANDED WIRE #1
26	W117	BLK WIRE #7
27	W118	ORN WIRE #8
28	W285	SOLENOID HARNESS
29	W287	COMMUNICATION HARNESS
30	W295	2 WIRE CUSTOMER HARNESS
31	W289	AUTHORIZATION HARNESS
32	W308	GRN WIRE #3
33	PLT2I-M	TIE WRAP
34	W324	PRIMARY I.S.WIRE HARNESS
35	W326	STANDARD LIQUID I.S. WIRE HARNESS
36	W165	I.S HANDLE SWITCH FIELD WIRING HARNESS
37	BC1610	MICON 500 SERIALIZED CSA RATINGS NAMEPLATE
38		
39	SKIL-471	Micon 500 RS-232 Communications Protocol Adapter Board
	SKIL-472	Micon 500 MNET Protocol Adapter Board
	SKIL-477	Micon 500 Tokheim Interface Protocol Adapter Board
	SKIL-483	Micon 500 RS-422 Communications Protocol Adapter Board
	SKIL-495	Micon 500 SMT Gilbarco 2-Wire Protocol Adapter Board
	SKIL-512	Micon 500 Tatsuno Protocol Adapter Board